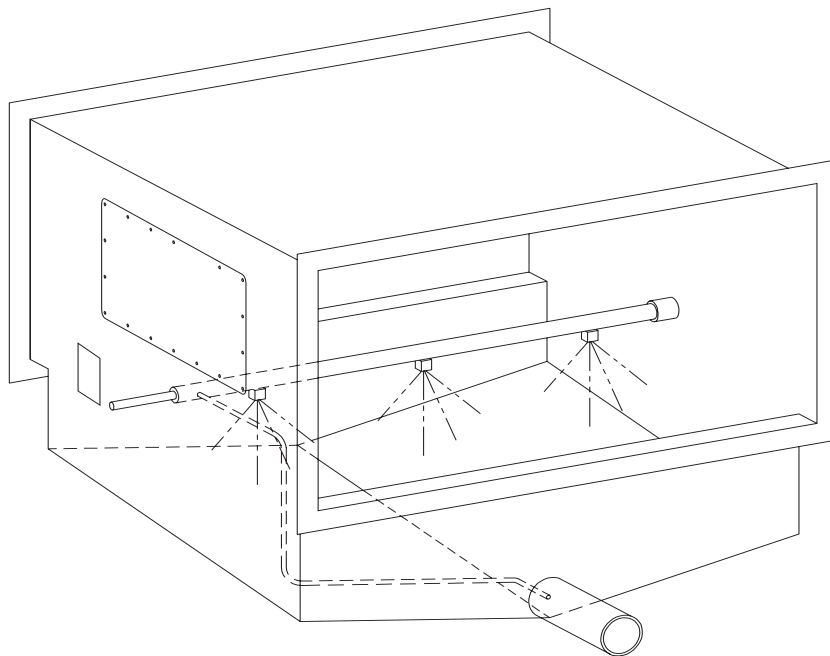




Breathe easy.

**The
Gaylord Duct Sump
Maintenance Manual
For
Model "GDS"**



GAYLORD INDUSTRIES

10900 SW AVERY STREET TUALATIN OR 97062-1149
1-800-547-9696 P: 503-691-2010 F: 503-692-6048

Gaylord Duct Sump

THIS PAGE INTENTIONALLY LEFT BLANK

Gaylord Duct Sump

MAINTENANCE MANUAL FOR GAYLORD DUCT SUMP MODEL GDS

General

The Gaylord Duct Sump is designed specifically for grease ducts in commercial kitchen operations. The sump is installed at the low point of the duct system where it collects grease, moisture, etc. A wash manifold with brass spray nozzles located approximately every 9" and a drain with a pre-flush line are an integral part of the sump. The sump is interconnected with the Gaylord control cabinet. The duct sump is washed with hot, detergent-injected water coming from the control cabinet (see illustration). For details on the control cabinet refer to the Gaylord Ventilator Technical Manual for the control cabinet model supplied.

Water Requirements

- 1.5 GPM at 40 psi for every 12" width of duct sump
- Water temperature 140°F minimum - 180°F maximum
- Water pressure 40 PSI minimum - 80 PSI maximum

Maintenance

An inspection of the duct sump should be made every 6 months. After a wash cycle and with the exhaust fan off, open the inspection door and check the following:

1. Check drain opening to make sure it is clear.
2. Check sump area for grease accumulation. If grease is not being washed away properly, it may be necessary to increase the length of the wash cycle, increase water temperature, or change the type of detergent being used.

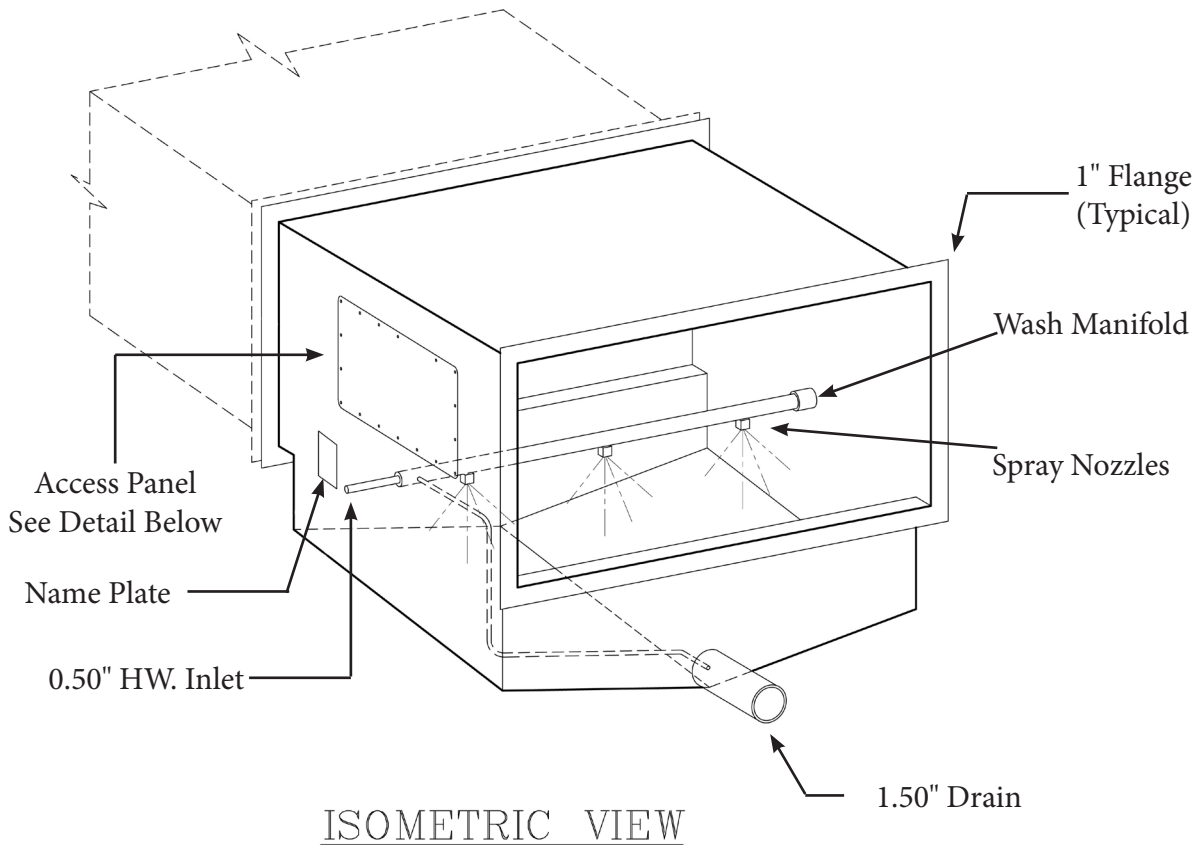
A clogged spray nozzle could also cause improper washing action. To check nozzles, close inspection door, energize wash cycle and open inspection door enough to visually observe the spray of each nozzle. If a nozzle appears to be clogged, remove and clean using a small wire or soak in white vinegar overnight to remove harness.

Replacement Parts

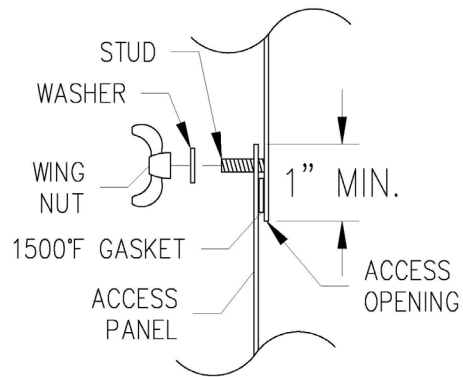
Nozzle - Part # 10301 (1/8 HH 3.6)

GAYLORD INDUSTRIES
P.O. Box 1149
Tualatin, Oregon 97062-1149
Phone: 800-547-9696
FAX: 503-692-6048
email: info@gaylordventilation.com

Gaylord Duct Sump



Access panel to be grease and water tight if width is over 36".
 Access panel is required on both sides.
 Access panel must be accessible.



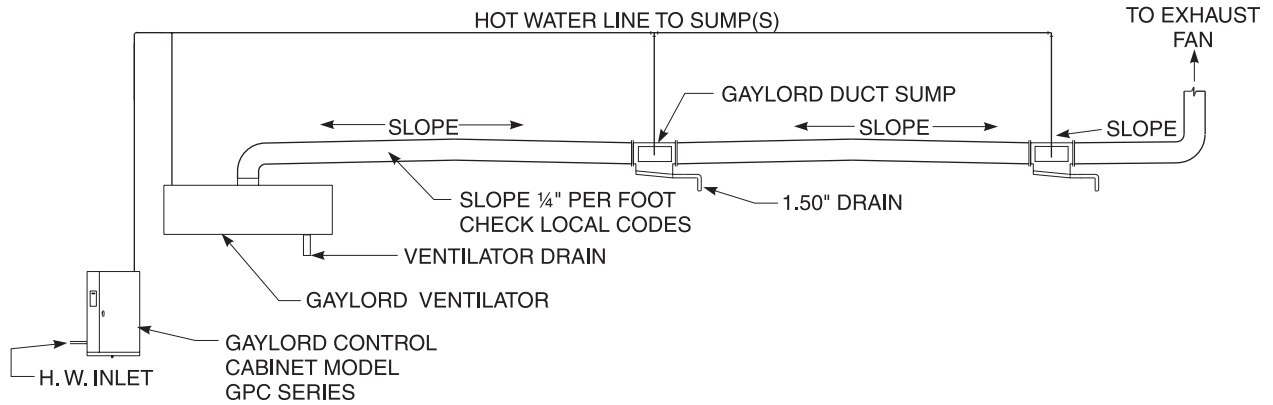
ACCESS DETAIL

Gaylord Duct Sump
 Model GDS Series

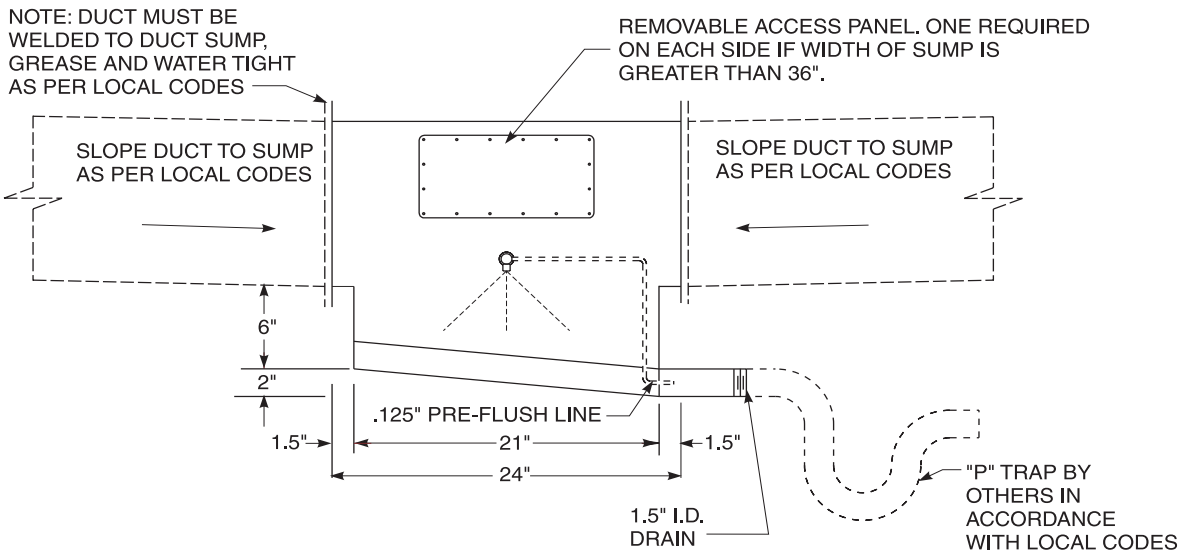
Gaylord Duct Sump

Item No.
Model No.

Gaylord Model GDS Duct Sump



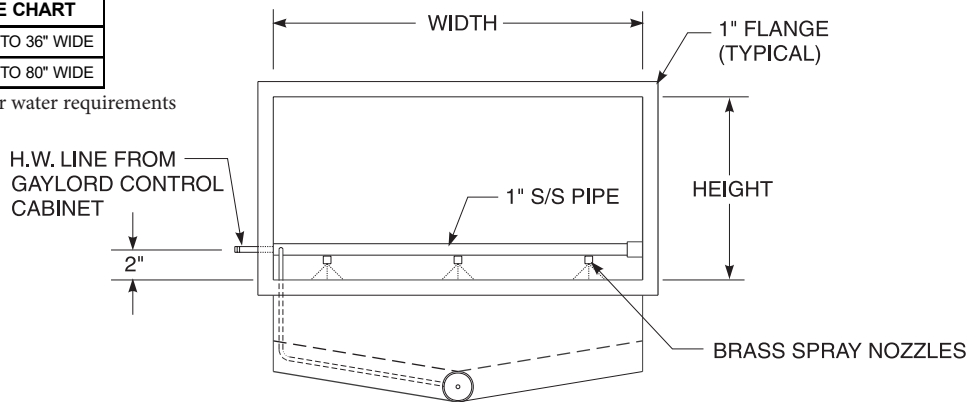
Typical Duct Sump Arrangement



Side View

PIPE SIZE CHART	
1/2"	UP TO 36" WIDE
3/4"	UP TO 80" WIDE

See page 3 for water requirements



End View

Gaylord Duct Sump

THIS PAGE INTENTIONALLY LEFT BLANK

Gaylord Duct Sump



Breathe easy.

Gaylord Industries
10900 SW Avery St.
Tualatin, OR 97062
Office: 503.691.2010
Toll Free: 800.547.9696
www.gaylordventilation.com

Gaylord Industries Product Warranty

Effective July 6, 2020

Gaylord Industries products and component parts furnished with the Gaylord products are warranted to be free from defects of material and workmanship under normal use when installed, operated and serviced in accordance with factory recommendation. For additional information, please view our warranties at www.gaylordventilation.com

Gaylord Industries Food Service Market – Limited Warranty

<https://www.gaylordventilation.com/notices-and-policies-gaylord/food-service-warranty>

Gaylord Industries Mechanical Market – Limited Warranty

<https://www.gaylordventilation.com/notices-and-policies-gaylord/mechanical-warranty>

Contact:

Gaylord Industries
10900 SW Avery Street
Tualatin OR 97062-8578
Toll Free: 800.547.9696
Direct: 503.691.2010
Fax: 503.692.6048



Breathe easy.



**WORLDWIDE SALES, MANUFACTURING AND SERVICE
FOR THE NAME AND LOCATION OF THE NEAREST
CERTIFIED SERVICE AGENCY, VISIT OUR WEB SITE:**

WWW.GAYLORDVENTILATION.COM

OR CONTACT US AT:

GAYLORD INDUSTRIES

10900 SW AVERY STREET
TUALATIN, OREGON 97062

Phone: 503-691-2010

1-800-547-9696

Fax: 503-692-6048

email: info@gaylordventilation.com

LOCAL SERVICE AGENCY